

APRIL 2023

✦ VOL. 22 ISSUE 9

# FREEDOM ELEMENTARY PTA NEWSLETTER



Thank you to all of our volunteers that helped make this month's holiday market successful!

If you would still like to join the PTA, you can go to our website [HERE](#)

**There are some t-shirts that are still available for purchase. There will be no new orders for shirts.**



Follow us on Facebook for the most up to date information!

FREEDOM ELEMENTARY PARENTS,  
MAINTAINED BY THE PTA (HOOPER, UT)

PTA MEETINGS THIS SCHOOL YEAR WILL BE HELD THE FIRST FRIDAY OF MOST MONTHS FROM 1:30-3 PM - EVERYONE IS WELCOME! LOCATION WILL BE ON THE STAGE UNLESS NOTIFIED OTHERWISE.





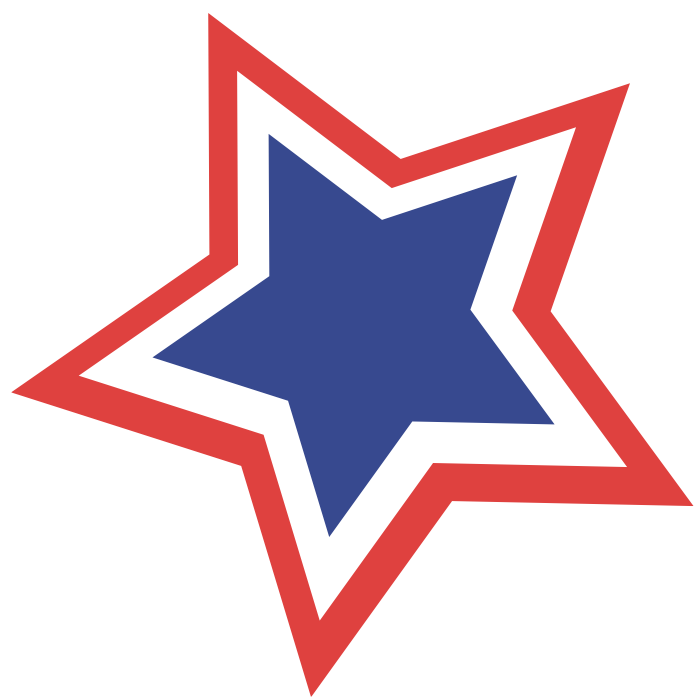
✦

# PTA VOLUNTEER ACKNOWLEDGEMENT

✦

Congrats to April's Volunteer of the month, Ashley  
Stone!

Top 3 Volunteers this month:



**Brittany Edwards**

**Emily Alatraste**

**Katherine Purser**



We have brought back volunteer appreciation! Every time you volunteer, your hours are counted. One person will be selected at random to receive a gift or gift card at each PTA meeting. We love our volunteers and we want to give you a shout out to be recognized for your dedication to the school and to the PTA!

*\*NOTE: Executive Board (President, Vice President, Treasurer and Secretary are excluded)*

---

PTA MEETINGS THIS SCHOOL YEAR WILL BE HELD THE  
FIRST FRIDAY OF MOST MONTHS FROM 1:30-3 PM -  
EVERYONE IS WELCOME! LOCATIONS ARE TBD.

---



# PTA CALENDAR

\*Schedule Subject to Change\*

# 2023-2024 SCHOOL YEAR

## AUGUST

- 21 - BACK TO SCHOOL NIGHT
- 23 - 1ST DAY OF SCHOOL (1ST-6TH ONLY)
- 23-25 - EARLY OUT
- 28 - 1ST DAY OF SCHOOL (KINDERGARTEN)

## SEPTEMBER

- 1 - PTA MEETING (1:30-3PM)
- 4 - NO SCHOOL (LABOR DAY)
- 13 - PANDA EXPRESS (ONLINE ONLY)
- 15 - FALL PICTURE DAY/EARLY OUT (PDD)
- 20 - FUN RUN CLASSROOM KICK OFF
- 29 - FUN RUN

## OCTOBER

- 4 - CUSTODIAL APPRECIATION DAY
- 6 - PTA MEETING (1:30-3PM)
- 9 - TEACHER DINNER
- 9-11 - P/T CONFERENCES/EARLY OUT  
BOOK FAIR
- 11 - SCHOOL LUNCH WORKERS'  
APPRECIATION DAY
- 12-13 - NO SCHOOL
- 18 - NATIONAL BOSSES DAY (PRINCIPAL) &  
BUS DRIVER/CROSSING GUARD  
APPRECIATION DAY
- 23 - REFLECTIONS DUE
- 25 - FLU CLINIC  
CAFE ZUPAS
- 26 - END 1ST QUARTER
- 27 - NO SCHOOL (PDD)
- 30 - BEGIN 2ND QUARTER

## NOVEMBER

- 1 - REFLECTIONS DUE TO COUNCIL
- 3 - PICTURE RETAKE DAY  
PTA APPRECIATION DAY  
PTA MEETING (1:30-3PM)
- 10 - GUEST & GOODIES
- 20 - MARCO'S PIZZA
- 22-24 - NO SCHOOL (THANKSGIVING)
- 30 - YEARBOOK COVER CONTEST

## DECEMBER

- 18- 20 - HOLIDAY MARKET
- 20 - EARLY OUT
- 21-1 - NO SCHOOL (WINTER BREAK)

## JANUARY

- (TBD) - DINNER FUNDRAISER
- 5 - PTA MEETING (1:30-3PM)
- 11 - END 2ND QUARTER
- 12-15 - NO SCHOOL (END QUARTER/MLK JR DAY)
- 16 - BEGIN 3RD QUARTER

## FEBRUARY

- 2 - PTA MEETING (1:30-3PM)
- 7 - TEACHER DINNER  
SCHOOL COUNSELOR APPRECIATION DAY
- 7-9 - P/T CONFERENCES/EARLY OUT  
BOOK FAIR
- 16-19 - NO SCHOOL (PRESIDENT'S DAY)
- 27 - CAFE ZUPAS

## MARCH

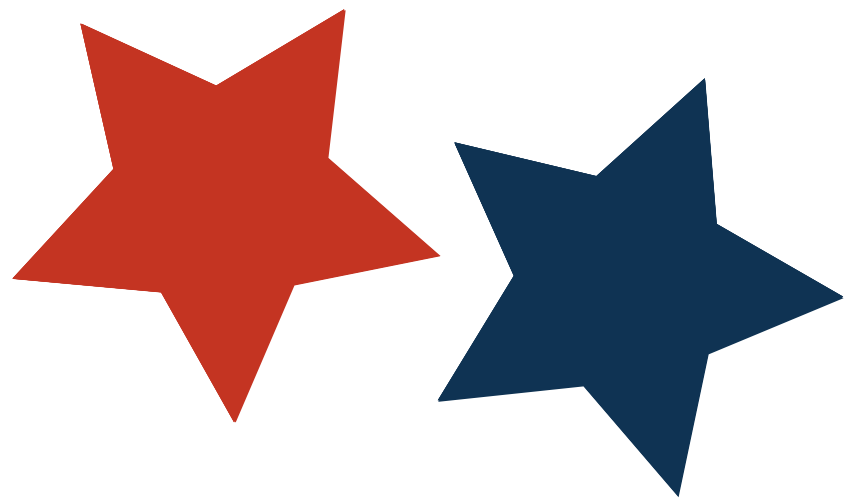
- 1 - SPRING PICTURE DAY  
PTA MEETING (1:30-3PM)  
PTA ELECTIONS
- 4-8 - READ ACROSS AMERICA WEEK
- 15 - END 3RD QUARTER/EARLY OUT (PDD)
- 20 - LITERACY NIGHT  
NEW BOUNDARIES OPEN HOUSE
- 25-28 - BUNNYGRAMS
- 29 - NO SCHOOL

## APRIL

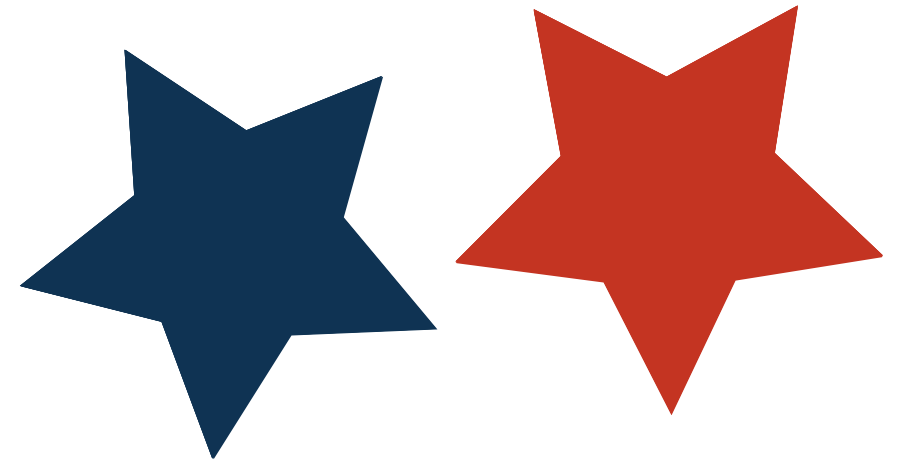
- (TBD) - DINNER FUNDRAISER
- 1-5 - NO SCHOOL (SPRING BREAK)
- 12 - LIBRARY WORKERS' DAY
- 15-19 - HOPE WEEK
- 19 - GUEST & GOODIES
- 24 - SECRETARIES/AIDES APPRECIATION DAY
- 24-26 - BOGO BOOK FAIR

## MAY

- 3 - PTA MEETING (1:30-3PM)
- 6-10 - TEACHER APPRECIATION
- 9 - SCHOOL NURSE APPRECIATION DAY
- 15 - CAFE ZUPAS
- 21 - FIELD DAY
- 24 - LAST DAY OF SCHOOL/EARLY OUT



# 2023



## AUGUST

S	M	T	W	T	F	S
		1	2	3	4	5
6	7	8	9	10	11	12
13	14	15	16	17	18	19
20	21	22	23	24	25	26
27	28	29	30	31		

## SEPTEMBER

S	M	T	W	T	F	S
					1	2
3	4	5	6	7	8	9
10	11	12	13	14	15	16
17	18	19	20	21	22	23
24	25	26	27	28	29	30

*Fundraiser Nights!*

Sept 13 - Panda Express

(Online Only)

## OCTOBER

S	M	T	W	T	F	S
1	2	3	4	5	6	7
8	9	10	11	12	13	14
15	16	17	18	19	20	21
22	23	24	25	26	27	28
29	30	31				

Oct 25 - Cafe Zupas

## NOVEMBER

S	M	T	W	T	F	S
			1	2	3	4
5	6	7	8	9	10	11
12	13	14	15	16	17	18
19	20	21	22	23	24	25
26	27	28	29	30		

Marco's Pizza

## DECEMBER

S	M	T	W	T	F	S
					1	2
3	4	5	6	7	8	9
10	11	12	13	14	15	16
17	18	19	20	21	22	23
24	25	26	27	28	29	30
31						

TBD

## JANUARY

S	M	T	W	T	F	S
1	2	3	4	5	6	7
8	9	10	11	12	13	14
15	16	17	18	19	20	21
22	23	24	25	26	27	28
29	30	31				

Jan 23 - Chipotle

## FEBRUARY

S	M	T	W	T	F	S
			1	2	3	4
5	6	7	8	9	10	11
12	13	14	15	16	17	18
19	20	21	22	23	24	25
26	27	28				

Feb 27 - Cafe Zupas

## APRIL

S	M	T	W	T	F	S
						1
2	3	4	5	6	7	8
9	10	11	12	13	14	15
16	17	18	19	20	21	22
23	24	25	26	27	28	29
30						

TBD

## MAY

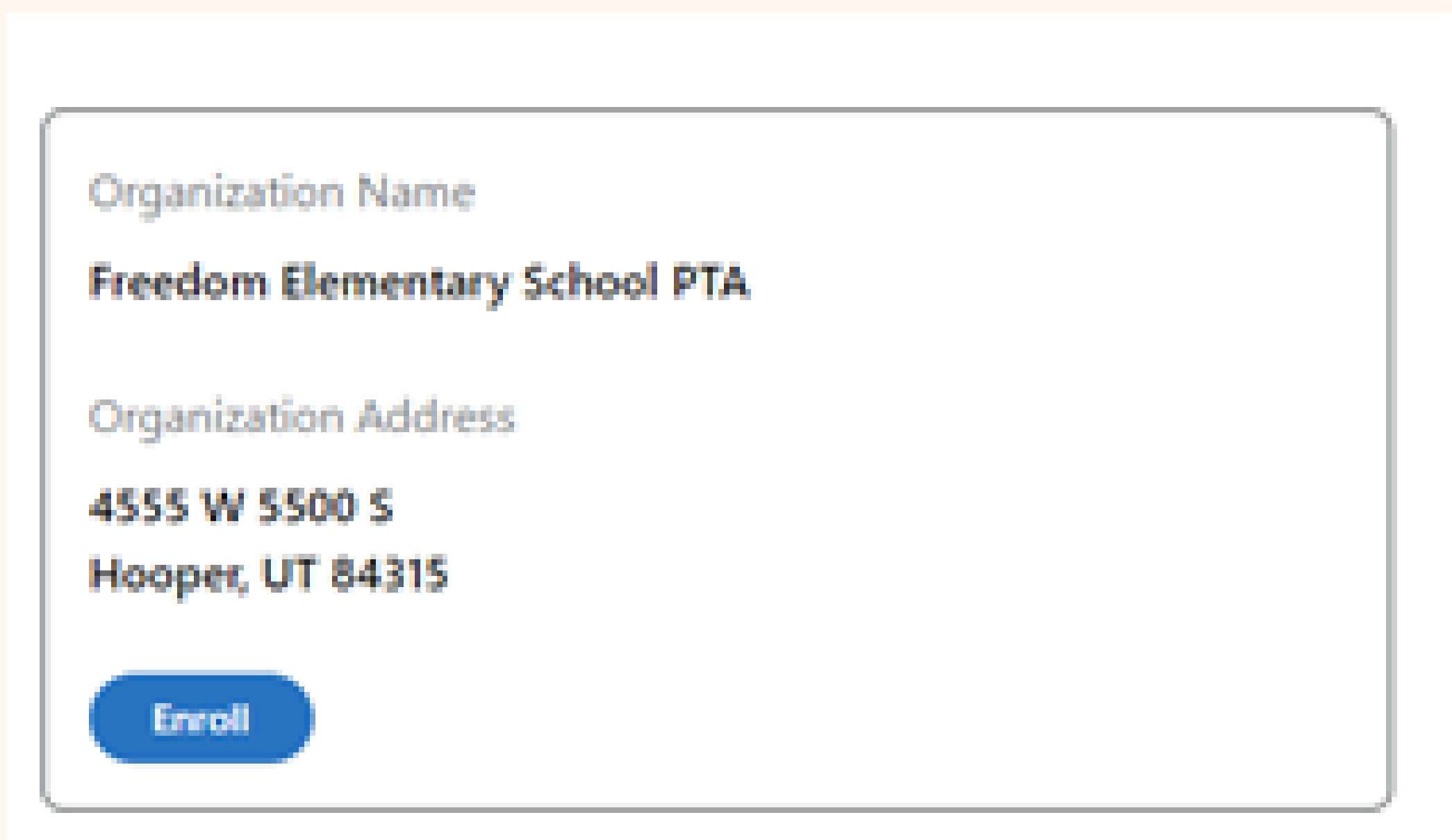
S	M	T	W	T	F	S
	1	2	3	4	5	6
7	8	9	10	11	12	13
14	15	16	17	18	19	20
21	22	23	24	25	26	27
28	29	30	31			

May 15 - Cafe Zupas



# Smith's INSPIRING DONATIONS

1. Log into your Smith's account either on your computer or your phone.
2. Go into your account.
3. Find and select "Inspiring Donations"
4. Search "Freedom Elementary."
5. Ensure you select the Freedom Elementary located in Hooper. It should look like the image below.
6. Select enroll.



Organization Name  
**Freedom Elementary School PTA**

Organization Address  
**4555 W 5500 S  
Hooper, UT 84315**

[Enroll](#)

\*Every time you use your loyalty card, 0.5% of eligible purchases are donated to the school.



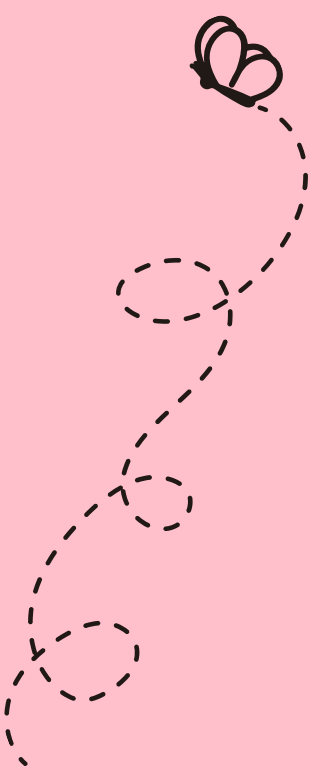
# breakfast

- 08. wg crumb square
- 09. breakfast sandwich
- 10. Pancake w/cinnamon glaze
- 11. chocolate or blueberry muffins
- 12. french toast sticks

- 15. donut
- 16. french toast
- 17. blueberry or chocolate muffins
- 18. waffles
- 19. Pancake sausage

- 22. wg crumb square
- 23. breakfast sausage
- 24. Pancake w/cinnamon glaze
- 25. chocolate & blueberry muffin
- 26. french toast stick

- 29. donuts
- 30. french toast sticks
- 01. chocolate or blueberry muffins
- 02. waffles
- 03. Pancake sausage



# Lunch

08. SWEET N SOUR CHICKEN

09. CORN DOGS

10. MEATBALL SUB

11. GLAZED CHICKEN DRUMSTICK

12. CHICKEN NUGGETS

15. ORANGE CHICKEN

16. STREET TACOS

17. CHICKEN SANDWICH

18. MAC N CHEESE

19. PIZZA

22. HAWAIIAN HAYSTACKS

23. NACHOS

24. PULLED PORK SANDWICHES

25. CHICKEN ALFREDO

26. PANCAKES

29. ORANGE CHICKEN

30. WALKING TACOS

01. GRILLED CHEESE

02. SPAGHETTI & MEATBALLS

03. POPCORN CHICKEN



# Staff BIRTHDAYS

## AUGUST

30 - CHRIS COREY

## SEPTEMBER

2 - MINDY RACKHAM  
4 - LORENA HERNANDEZ  
19 - TAMMY MANNING

## DECEMBER (HALF - JUNE)

1 - BRANDON LOTT (HALF)  
4 - MELISSA DORIS  
5 - STERLING NILSSEN (HALF)  
6 - DAWNELLE PORTER-LOPEZ (HALF)  
8 - CHARREE ESSLER (HALF)  
9 - JAMIE STETTLER  
11 - HEIDI SALMOND (HALF)  
12 - CRYSTAL WOYTKO (HALF)  
12 - CARY ZIPPERER (HALF)  
14 - ANNALYNNE YAMASHITA  
17 - GRANDMA STELLA (HALF)  
18 - KELLY BINGHAM (HALF)  
20 - MELINDA COSTA  
24 - LORI MUDROW (HALF)  
25 - VERONICA LYTLE  
27 - MICHELLE WRIGHT  
27 - MIKE YAMASHITA (HALF)  
27 - HEIDI BOWDEN  
28 - DAWN PARKER  
28 - KATY BLAKELEY

## MARCH

1 - ALISA LARSEN  
4 - LAURIE NISONGER  
7 - ALICIA CHRISTIANSEN  
11 - JANETTE MCNEE  
11 - SARAH DOUGLAS  
12 - CASSIE TREMELLING  
17 - TAMI JONES  
21 - KIM MALAY  
21 - SARAH DONEY

## OCTOBER

3 - JENNY ROSS  
3 - RACHEL MUSSELMAN  
8 - AMY DOW  
10 - GINA BUCKWAY  
21 - SHANTELE WITTER  
22 - LEIGHANN EDWARDS  
23 - KELLIE HORTON  
28 - BEATRIZ AVILA

## JANUARY (HALF - JULY)

2 - MELISSA WATKINS (HALF)  
4 - BRYNN EYRE  
6 - ARIAH LEE (HALF)  
8 - BECKY TURNER (HALF)  
10 - JON WRIGHT  
10 - HEATHER SADDLER (HALF)  
16 - ANICK BUVAL (HALF)  
16 - BRIDGER BUTLER-JAMES (HALF)  
17 - JENNIFER BARRERA  
18 - GRANDMA JUDY  
19 - STACIE NICKLE (HALF)  
24 - LISA MENDOZA  
25 - LORI PARKER  
27 - JONEE SUSTAITA  
28 - INGRID PETERSON  
31 - JULIE HUGHS (HALF)  
31 - STEPHANIE SCHUMACHER

## APRIL

7 - CLENOR RAYNOR  
25 - KAITLYN WARNER  
25 - NICOLE OVERDIEK

## NOVEMBER (HALF - MAY)

8 - NICKI MEDINA  
9 - JESSICA OLSEN  
19 - JODEE LEPELLEY  
21 - PAM ARAVE  
23 - SHAUNA NEUMARKER  
30 - AMNDA ROSE (HALF)

## FEBRUARY (HALF - AUGUST)

1 - CINDY RASMUSSEN (HALF)  
2 - HOLLIE LOVELESS (HALF)  
4 - STEPHANIE WAITE  
6 - HEATHER HOGGE  
6 - TRICIA WATKINS (HALF)  
9 - TAMMY NYE  
13 - LORI MCCABE (HALF)  
14 - JERYLDEAN CLARK  
14 - VALISA DILWORTH  
14 - LILLY SHEARER  
14 - ALEXIS HOLGATE (HALF)  
22 - KIM MATTINGLY

## MAY

1 - KATIE DANNEHL  
9 - PAM SEEGMILLER  
10 - KRIS MANNING  
10 - TAMI OLSEN  
12 - ROCIO TAYLOR  
12 - ABY DOW  
13 - MONICA HOKANSON  
14 - CATHY OTTLEY  
16 - SALEENN CALLISTER  
20 - FELICIA CULVER  
21 - JENNIFER WHITNEY  
24 - SOPHIA VOLK  
25 - HEATHER MCLAUGHLIN  
26 - KAMYLLE SCHULTZ